

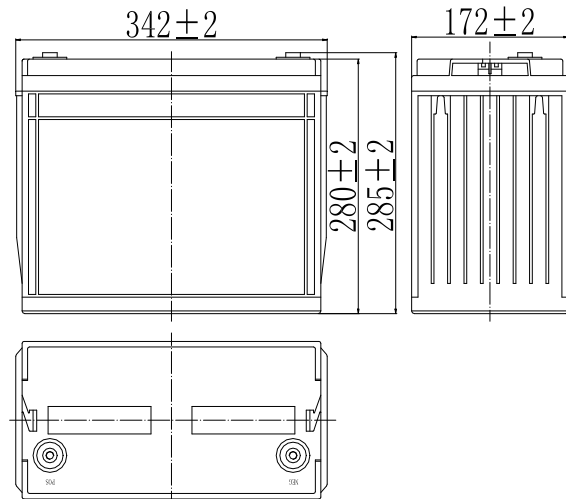
## LFP12150CHR FR(12V, 4200 Watts/cell@10min.Rate)

### Specifications

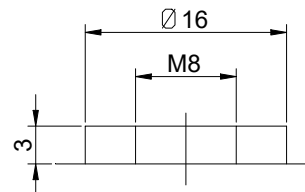
Nominal Voltage		12 V
Number of cell		6 cells
Capacity(10min.rate, 25°C)		4200Watts@1.75V/cell
Dimension	Length	342 ± 2mm (13.46inch)
	Width	172 ± 2mm (6.77inch)
	Height	280 ± 2mm (11.02inch)
	Total Height	285 ± 2mm (11.22inch)
Approx. Weight		47kg (103.6lbs) ± 5%
Terminal type		T11
Internal resistance (Fully charged, 25°C)		Approx. 3.0m Ω
Capacity affected by temperature (20HR)	40°C	102%
	25°C	100%
	0°C	85%
	-15°C	65%
Self-discharge (25°C)	3 month	Remaining Capacity: 91%
	6 month	Remaining Capacity: 82%
	12 month	Remaining Capacity: 65%
Nominal operating temperature		25°C ± 3°C (77°F ± 5°F)
Operating temperature range	Discharge	-40°C ~ 50°C (-40°F ~ 122°F)
	Charge	-10°C ~ 45°C (14°F ~ 113°F)
	Storage	-20°C ~ 50°C (-4°F ~ 122°F)
Float charging voltage(25°C)		13.50 to 13.80V Temperature compensation: -18mV/°C
Cyclic charging voltage(25°C)		14.50 to 14.90V Temperature compensation: -30mV/°C
Maximum charging current		45A
Terminal material		Copper
Maximum discharge current		1500A(5 sec.)
Designed floating life(25°C)		10 years

- ◆ Specially designed for high power output.
- ◆ Absorbent glass mat technology;
- ◆ Recognized by UL & CE;
- ◆ UL94-VO ABS container.

### Dimensions



### Terminal



Terminal T11

### Constant Current Discharge Characteristics (A, 25°C)

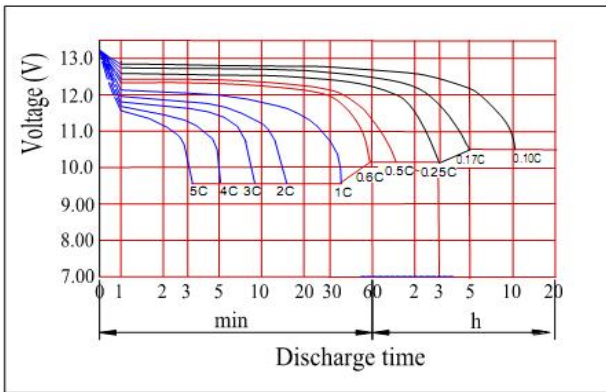
F.V/TIME	5min	10min	15min	20min	30min	45min	60min	2h	3h	4h	5h	10h
1.60V/cell	605	403	331	265	188	140	114	62.2	43.7	34.5	28.7	15.2
1.65V/cell	586	391	323	258	184	137	112	61.9	43.5	34.3	28.6	15.1
1.67V/cell	577	385	321	254	182	136	111	61.7	43.4	34.2	28.5	15.1
1.70V/cell	562	374	312	249	178	133	110	61.3	43.2	34.1	28.4	15.0
1.75V/cell	538	359	300	241	174	130	107	60.4	42.9	33.9	28.2	15.0
1.80V/cell	508	338	285	228	168	125	104	58.8	41.6	32.8	27.3	15.0

### Constant Power Discharge Characteristics (Watt/cell, 25°C)

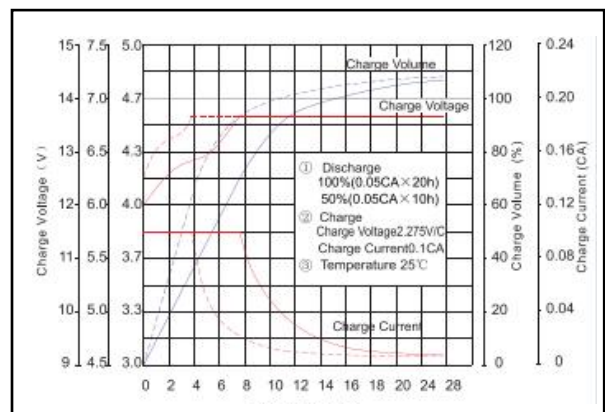
F.V/TIME	5min	10min	15min	20min	30min	45min	60min	2h	3h	4h	5h	10h
1.60V/cell	1101	758	639	511	362	270	220	122	86.2	68.0	56.8	30.7
1.65V/cell	1067	746	623	498	355	264	217	120	85.7	67.5	56.5	30.5
1.67V/cell	1051	742	620	490	350	261	214	120	85.4	67.3	56.3	30.3
1.70V/cell	1023	728	600	481	344	256	211	119	85.1	67.1	56.1	30.2
1.75V/cell	979	708	581	464	336	250	207	118	84.4	66.7	55.8	30.1
1.80V/cell	925	694	549	439	323	241	200	115	82.0	64.6	54.1	30.0

Note: The above characteristics data can be obtained within three charge/discharge cycles.

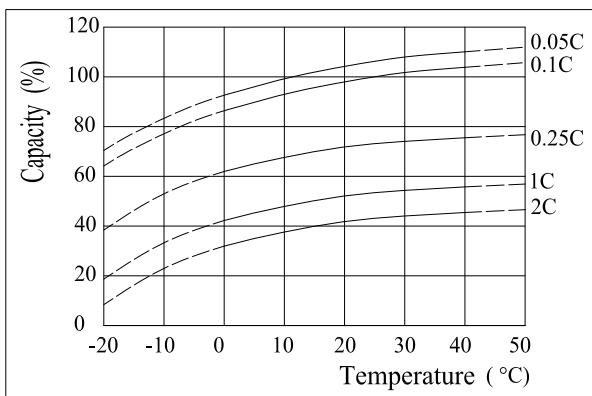
**Discharge Characteristics(25°C)**



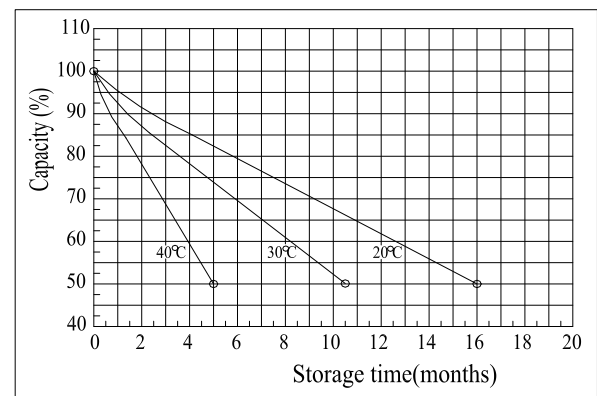
**Charging Characteristics(25°C)**



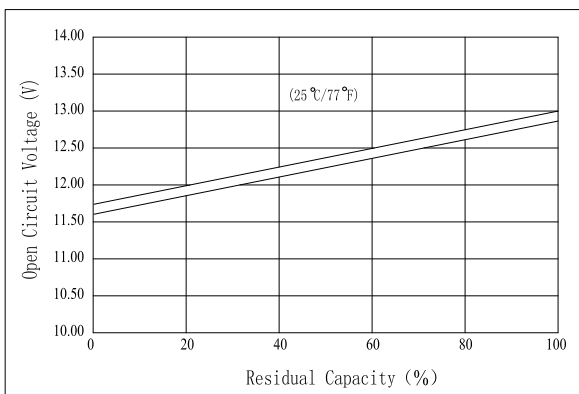
**Effect of Temperature on Capacity**



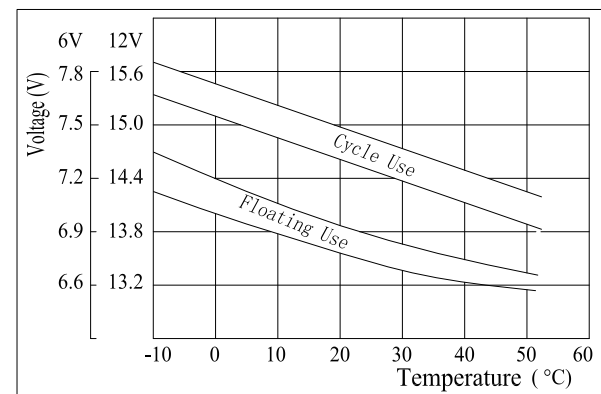
**Self-discharge Characteristics**



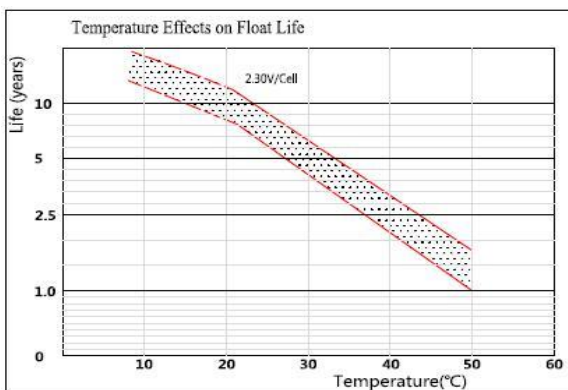
**The Relationship for Open Circuit Voltage and Residual Capacity (25°C)**



**The Relationship for Charging Voltage and Temperature**



**Floating Life on Temperature**



**Cycle Life on D.O.D(25°C)**

