

# CFPG2500 (2V500Ah)

## Specifications

Nominal Voltage		2 V
Capacity (25°C)	10HR(1.80V)	500 Ah
	3HR(1.75V)	387Ah
	1HR(1.60V)	300Ah
Dimension	Length	241 ± 2mm (9.49inch)
	Width	171 ± 2mm (6.73inch)
	Height	330 ± 2mm (12.99inch)
	Total Height	365 ± 2mm (14.37inch)
Approx. Weight		31.5kg (69.3lbs) ± 3%
Terminal type		T10
Internal resistance (Fully charged, 25°C)		Approx. 0.55m Ω
Capacity affected by temperature (10HR)	40°C	103%
	25°C	100%
	0°C	88%
	-15°C	70%
Self-discharge (25°C)	3 month	Remaining Capacity: 94%
	6 month	Remaining Capacity: 88%
	12 month	Remaining Capacity: 75%
Nominal operating temperature		25°C ± 3°C (77°F ± 5°F)
Operating temperature range	Discharge	-15°C ~ 55°C (5°F ~ 131°F)
	Charge	-10°C ~ 55°C (14°F ~ 131°F)
	Storage	-20°C ~ 55°C (-4°F ~ 131°F)
Float charging voltage(25°C)		2.25 to 2.30V Temperature compensation: -3mV/°C
Cyclic charging voltage(25°C)		2.35 to 2.40V Temperature compensation: -5mV/°C
Maximum charging current		100A
Terminal material		Copper
Maximum discharge current		2500A(5 sec.)
Designed floating life(20°C)		20 years

- ◆ Gelled electrolyte technology;
- ◆ PVC separator;
- ◆ Recognized by UL & CE;
- ◆ ABS container.

## Constant Current Discharge Characteristics (A, 25°C)

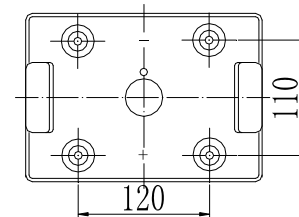
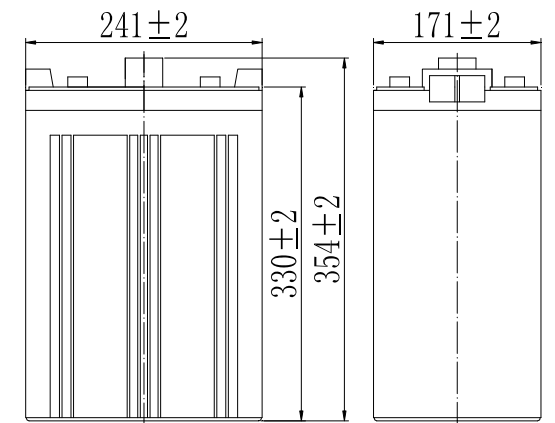
F.V/TIME	30min	60min	2h	3h	4h	5h	6h	8h	10h	20h	48h	120h
1.60V	425	300	184	130	105	91.0	78.0	61.0	51.0	26.9	---	---
1.65V	419	295	181	130	104	90.0	77.5	61.0	51.0	26.9	--	--
1.70V	409	289	180	129	103	89.5	77.0	60.5	50.5	26.5	12.2	---
1.75V	400	284	179	128	103	89.0	76.5	60.0	50.5	26.5	12.2	5.05
1.80V	389	274	174	124	99.5	86.5	74.0	58.0	50.0	26.4	12.1	5.00

## Constant Power Discharge Characteristics (Watt, 25°C)

F.V/TIME	30min	60min	2h	3h	4h	5h	6h	8h	10h	20h	48h	120h
1.60V	795	570	354	255	205	179	154	122	102	53.5	---	---
1.65V	780	560	350	254	204	179	153	121	101	53.5	--	--
1.70V	765	545	349	250	204	176	153	120	101	53.0	24.9	---
1.75V	750	535	340	250	201	175	150	120	100	53.0	24.6	10.30
1.80V	725	520	334	244	195	170	146	116	99.5	52.5	24.5	10.25

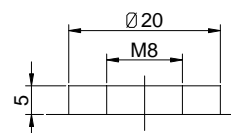
Note: The above characteristics data can be obtained within three charge/discharge cycles.

## Dimensions



Total Height: 365  
(Included Top Cover)

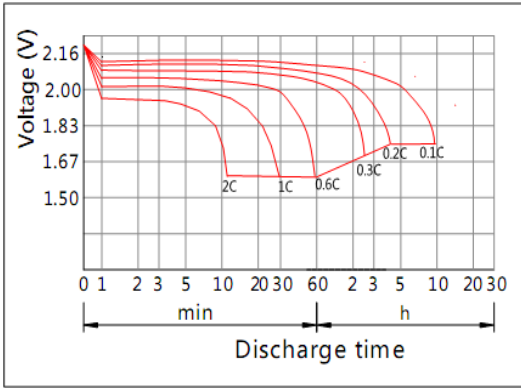
## Terminal



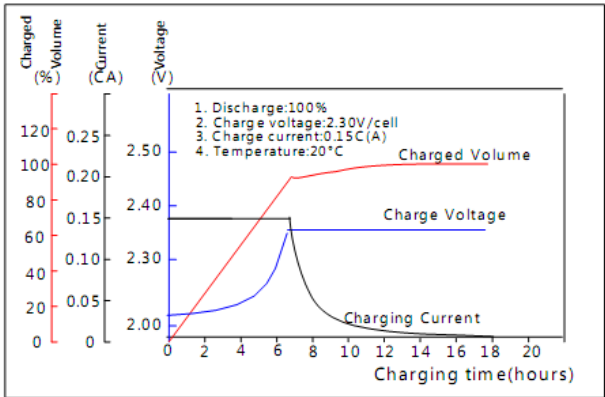
Terminal T10

# CFPG2500 (2V500Ah)

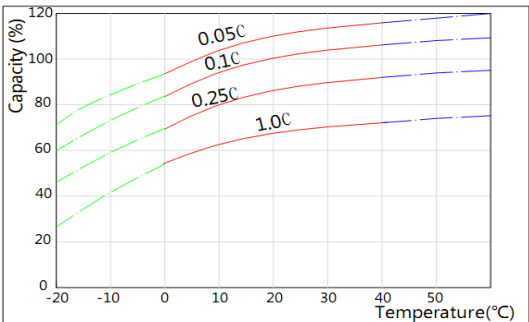
**Discharge Characteristics(25°C)**



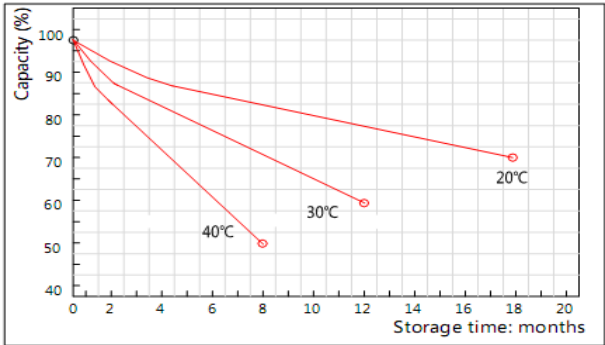
**Charging Characteristics(25°C)**



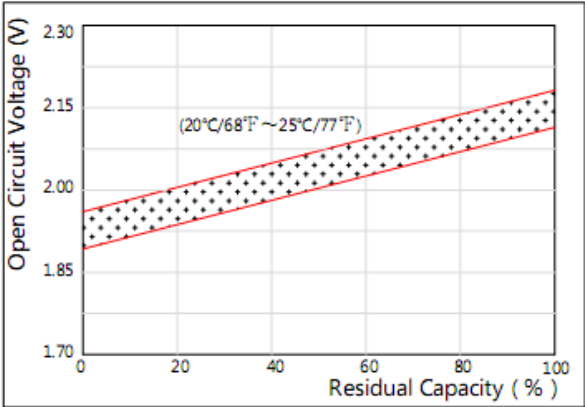
**Effect of Temperature on Capacity**



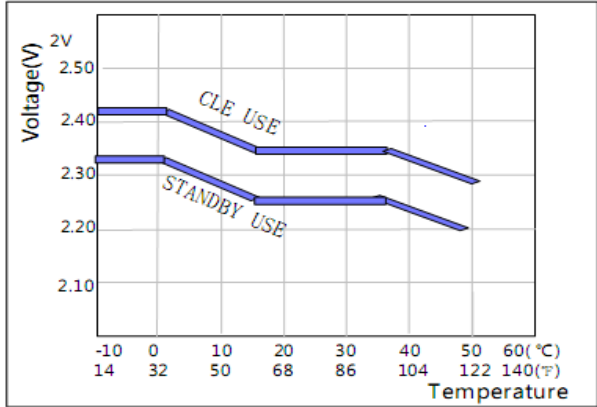
**Self-discharge Characteristics**



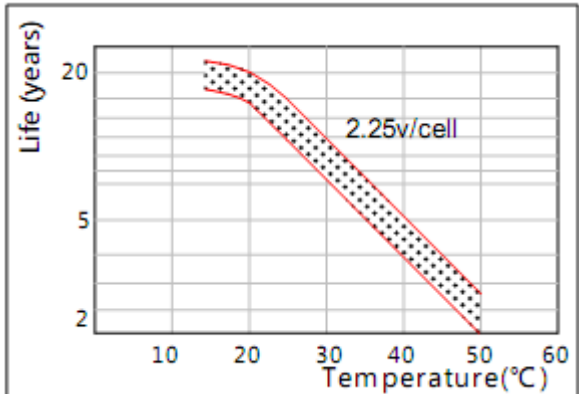
**The Relationship for Open Circuit Voltage and Residual Capacity (25°C)**



**The Relationship for Charging Voltage and Temperature**



**Floating Life on Temperature**



**Cycle Life on D.O.D(25°C)**

