

# CFPG21500 (2V1500Ah)

## Specifications

Nominal Voltage		2 V
Capacity (25°C)	10HR(1.80V)	1500 Ah
	3HR(1.75V)	1149 Ah
	1HR(1.60V)	900Ah
Dimension	Length	400±2mm (15.75inch)
	Width	350±2mm (13.78inch)
	Height	345±2mm (13.58inch)
	Total Height	382±3mm (15.04inch)
Approx. Weight		97kg (213.4lbs) ± 3%
Terminal type		T10
Internal resistance (Fully charged, 25°C)		Approx. 0.22mΩ
Capacity affected by temperature (10HR)	40°C	103%
	25°C	100%
	0°C	88%
	-15°C	70%
Self-discharge (25°C)	3 month	Remaining Capacity: 94%
	6 month	Remaining Capacity: 88%
	12 month	Remaining Capacity: 75%
Nominal operating temperature		25°C ± 3°C (77°F ± 5°F)
Operating temperature range	Discharge	-15°C ~ 55°C (5°F ~ 131°F)
	Charge	-10°C ~ 55°C (14°F ~ 131°F)
	Storage	-20°C ~ 55°C (-4°F ~ 131°F)
Float charging voltage(25°C)		2.25 to 2.30V Temperature compensation: -3mV/°C
Cyclic charging voltage(25°C)		2.35 to 2.40V Temperature compensation: -5mV/°C
Maximum charging current		300A
Terminal material		Copper
Maximum discharge current		9000A(5 sec.)
Designed floating life(20°C)		20 years

- ◆ Gelled electrolyte technology;
- ◆ PVC separator;
- ◆ Recognized by UL & CE;
- ◆ ABS container.

## Constant Current Discharge Characteristics (A, 25°C)

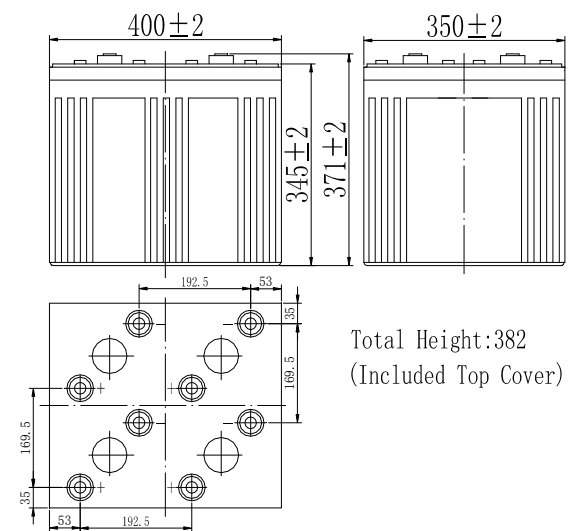
F.V/TIME	30min	60min	2h	3h	4h	5h	6h	8h	10h	20h	24h	120h
1.60V	1275	900	548	390	314	273	234	183	153	80.1	---	---
1.65V	1250	882	545	389	312	270	233	183	153	80.0	--	--
1.70V	1224	864	540	386	309	269	231	182	152	79.8	36.6	--
1.75V	1200	848	533	383	308	267	230	180	152	79.4	36.6	15.15
1.80V	1163	821	519	371	299	260	222	174	150	78.8	36.3	15.00

## Constant Power Discharge Characteristics (Watt, 25°C)

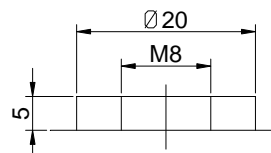
F.V/TIME	30min	60min	2h	3h	4h	5h	6h	8h	10h	20h	24h	120h
1.60V	2385	1710	1058	765	615	537	461	366	305	161	---	---
1.65V	2340	1680	1052	761	611	534	459	363	303	161	--	--
1.70V	2295	1635	1043	755	608	530	456	360	303	159	74.6	--
1.75V	2250	1605	1026	750	603	527	452	359	300	159	73.8	30.9
1.80V	2175	1560	1001	728	585	510	438	348	299	158	73.4	30.8

Note: The above characteristics data can be obtained within three charge/discharge cycles.

## Dimensions



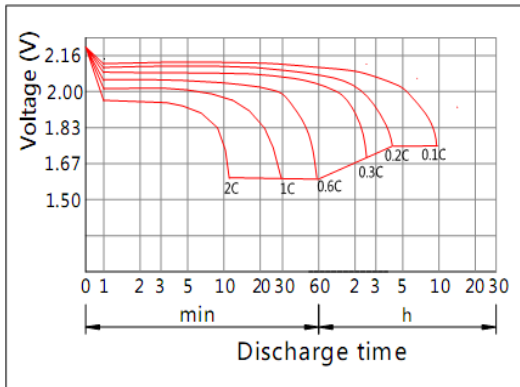
## Terminal



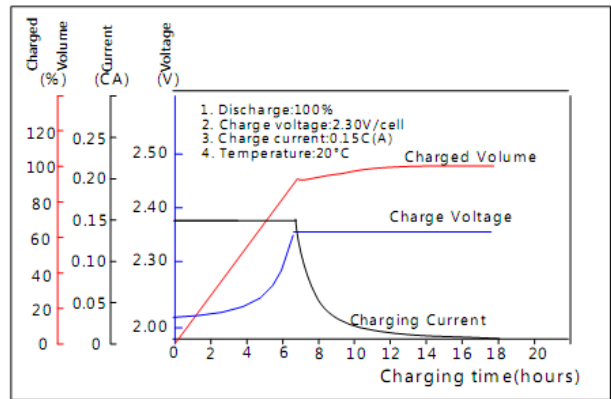
Terminal T10

# CFPG21500 (2V1500Ah)

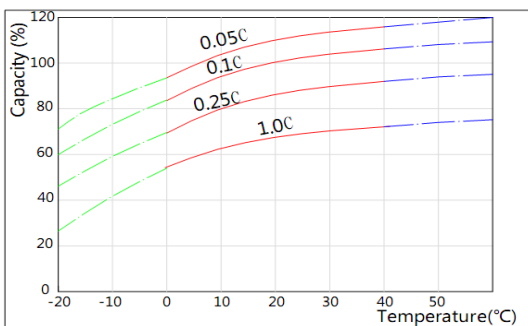
## Discharge Characteristics(25°C)



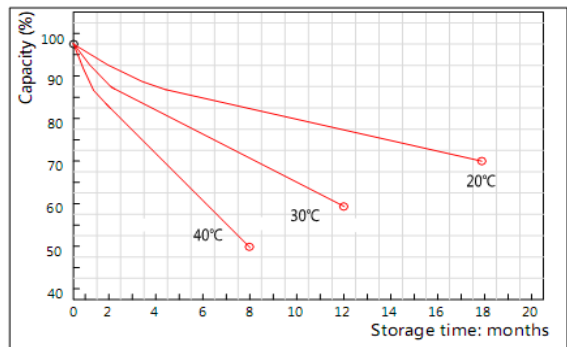
## Charging Characteristics(25°C)



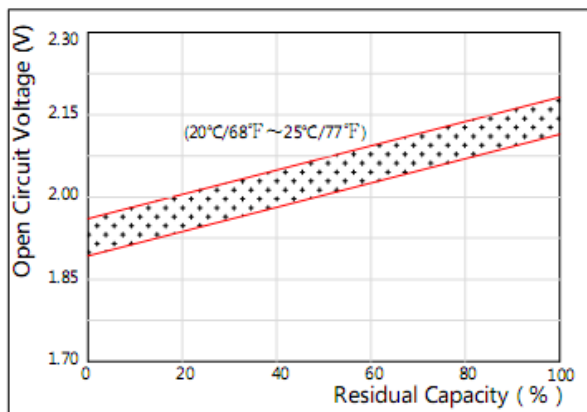
## Effect of Temperature on Capacity



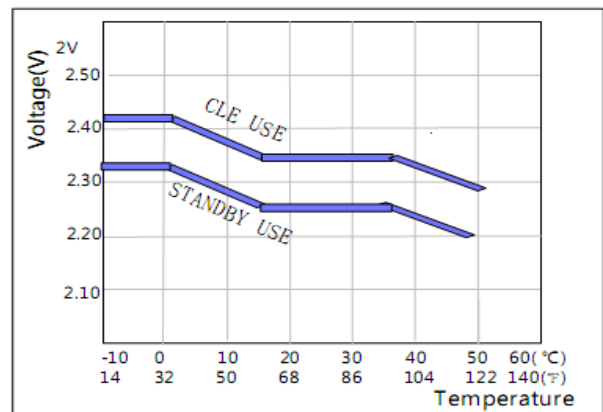
## Self-discharge Characteristics



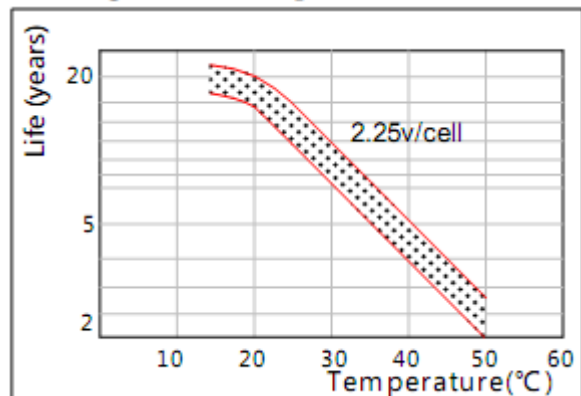
## The Relationship for Open Circuit Voltage and Residual Capacity (25°C)



## The Relationship for Charging Voltage and Temperature



## Floating Life on Temperature



## Cycle Life on D.O.D(25°C)

