

CFPG23000 (2V3000Ah)

Specifications

Nominal Voltage		2 V
Capacity (25°C)	10HR(1.80V)	3000 Ah
	3HR(1.75V)	2295Ah
	1HR(1.60V)	1800Ah
Dimension	Length	710 ± 3mm (27.95inch)
	Width	352 ± 2mm (13.86inch)
	Height	345 ± 2mm (13.58inch)
	Total Height	382 ± 3mm (15.04inch)
Approx. Weight		198kg (435lbs) ± 3%
Terminal type		T10
Internal resistance (Fully charged, 25°C)		Approx. 0.13m Ω
Capacity affected by temperature (10HR)	40°C	103%
	25°C	100%
	0°C	88%
	-15°C	70%
Self-discharge (25°C)	3 month	Remaining Capacity: 94%
	6 month	Remaining Capacity: 88%
	12 month	Remaining Capacity: 75%
Nominal operating temperature		25°C ± 3°C (77°F ± 5°F)
Operating temperature range	Discharge	-15°C ~ 55°C (5°F ~ 131°F)
	Charge	-10°C ~ 55°C (14°F ~ 131°F)
	Storage	-20°C ~ 55°C (-4°F ~ 131°F)
Float charging voltage(25°C)		2.25 to 2.30V Temperature compensation: -3mV/°C
Cyclic charging voltage(25°C)		2.35 to 2.40V Temperature compensation: -5mV/°C
Maximum charging current		600A
Terminal material		Copper
Maximum discharge current		15000A(5 sec.)
Designed floating life(20°C)		20 years

- ◆ Gelled electrolyte technology;
- ◆ PVC separator;
- ◆ Recognized by UL & CE;
- ◆ ABS container.

Constant Current Discharge Characteristics (A, 25°C)

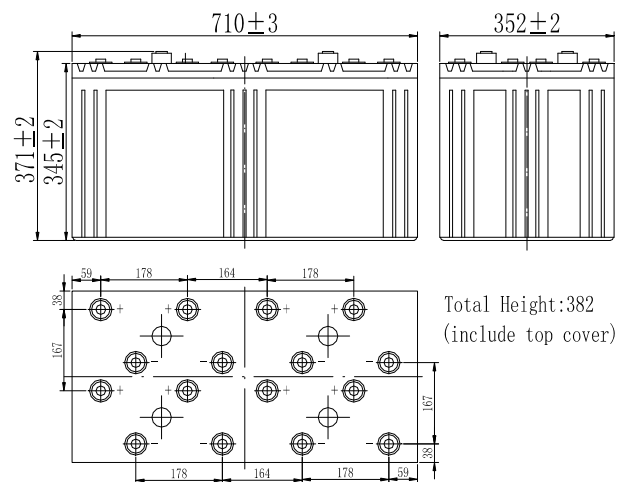
F.V/TIME	30min	60min	2h	3h	4h	5h	6h	8h	10h	20h	24h	120h
1.60V	2499	1800	1097	780	629	546	468	366	306	161	---	---
1.65V	2450	1764	1091	779	624	540	467	366	306	161	--	--
1.70V	2399	1728	1080	773	618	539	462	365	305	159	73.2	--
1.75V	2352	1697	1067	765	617	534	461	360	305	159	73.2	30.3
1.80V	2280	1643	1038	743	599	521	444	348	300	158	72.6	30.0

Constant Power Discharge Characteristics (Watt, 25°C)

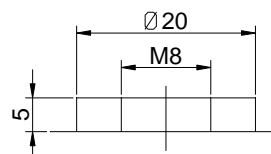
F.V/TIME	30min	60min	2h	3h	4h	5h	6h	8h	10h	20h	24h	120h
1.60V	4675	3420	2117	1530	1230	1074	923	732	611	323	---	---
1.65V	4586	3360	2105	1523	1223	1068	918	726	606	323	--	--
1.70V	4498	3270	2087	1511	1217	1061	912	720	606	318	149	--
1.75V	4410	3210	2052	1500	1206	1055	905	719	600	318	148	61.8
1.80V	4263	3120	2003	1457	1170	1020	876	696	599	317	147	61.7

Note: The above characteristics data can be obtained within three charge/discharge cycles.

Dimensions



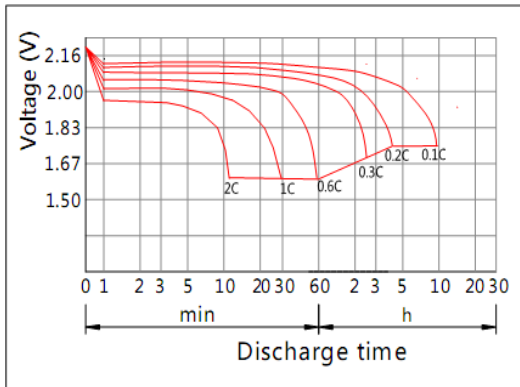
Terminal



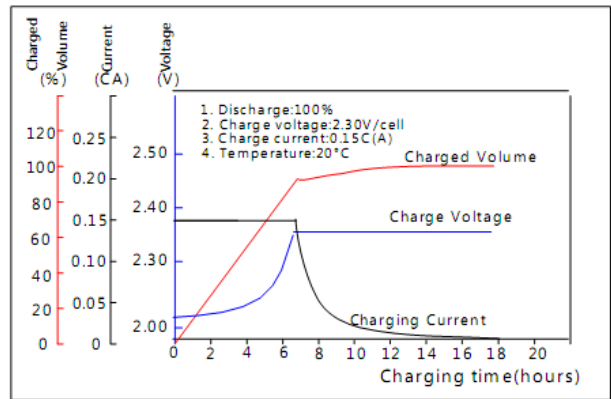
Terminal T10

CFPG23000 (2V3000Ah)

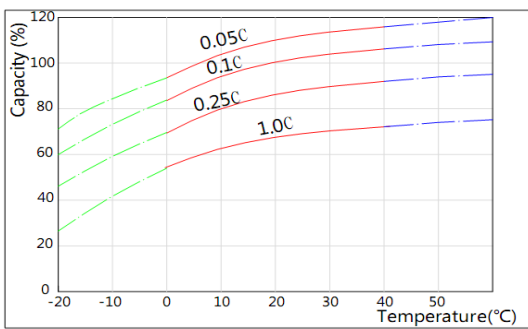
Discharge Characteristics(25°C)



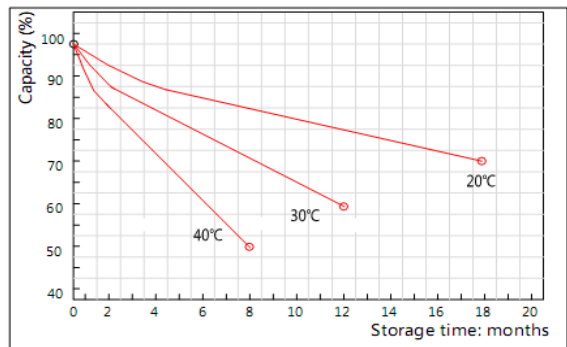
Charging Characteristics(25°C)



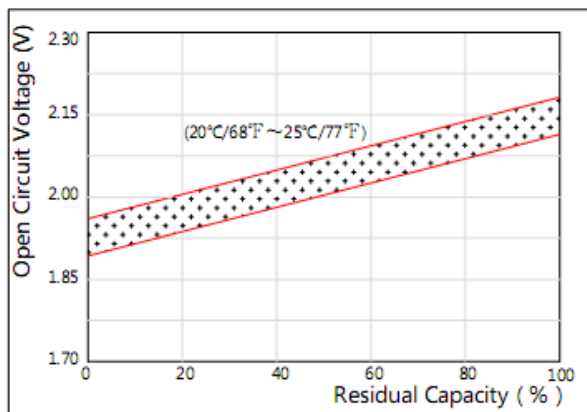
Effect of Temperature on Capacity



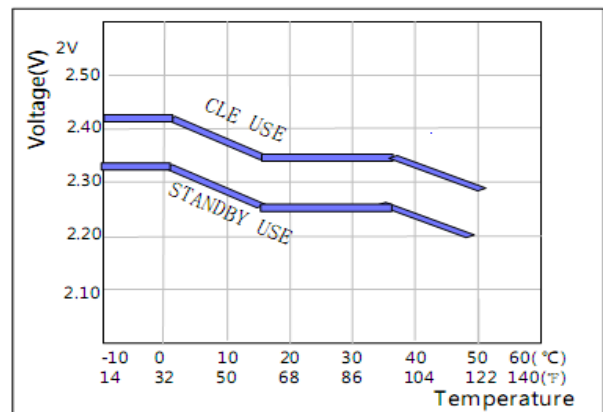
Self-discharge Characteristics



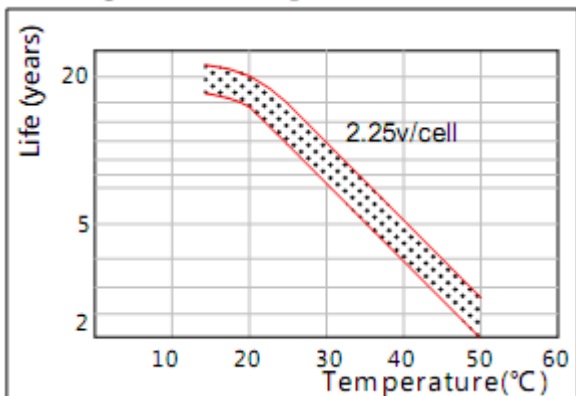
The Relationship for Open Circuit Voltage and Residual Capacity (25°C)



The Relationship for Charging Voltage and Temperature



Floating Life on Temperature



Cycle Life on D.O.D(25°C)

