

LFPG12160 (12V160Ah)

Specifications

| | | |
|---|--------------|---|
| Nominal Voltage | | 12 V |
| Capacity (25°C) | 20HR(10.5V) | 160 Ah |
| | 5HR(10.2V) | 125Ah |
| | 1HR(9.6V) | 92.8 Ah |
| Dimension | Length | 530 ± 2mm (20.87inch) |
| | Width | 207 ± 2mm (8.15inch) |
| | Height | 214 ± 2mm (8.43inch) |
| | Total Height | 214 ± 2mm (8.43inch) |
| Approx. Weight | | 53 kg (117lbs) ± 4% |
| Terminal type | | T11 |
| Internal resistance (Fully charged, 25°C) | | Approx. 3.2m Ω |
| Capacity affected by temperature (10HR) | 40°C | 103% |
| | 25°C | 100% |
| | 0°C | 88% |
| | -15°C | 70% |
| Self-discharge (25°C) | 3 month | Remaining Capacity: 94% |
| | 6 month | Remaining Capacity: 88% |
| | 12 month | Remaining Capacity: 75% |
| Nominal operating temperature | | 25°C ± 3°C (77°F ± 5°F) |
| Operating temperature range | Discharge | -15°C ~ 50°C (5°F ~ 131°F) |
| | Charge | -10°C ~ 50°C (14°F ~ 131°F) |
| | Storage | -20°C ~ 50°C (-4°F ~ 131°F) |
| Float charging voltage(25°C) | | 13.50 to 13.80V Temperature compensation: -18mV/°C |
| Cyclic charging voltage(25°C) | | 14.10 to 14.40V Temperature compensation: -30mV/°C |
| Maximum charging current | | 32A |
| Terminal material | | Copper |
| Maximum discharge current | | 1600A(5 sec.) |
| Designed floating life(20°C) | | 15 years |

- ◆ Gelled electrolyte technology;
- ◆ PVC separator;
- ◆ Recognized by UL & CE;
- ◆ ABS container.

Constant Current Discharge Characteristics (A, 25°C)

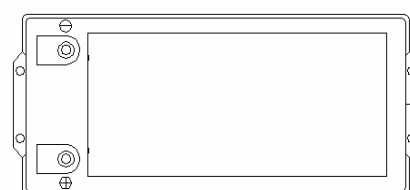
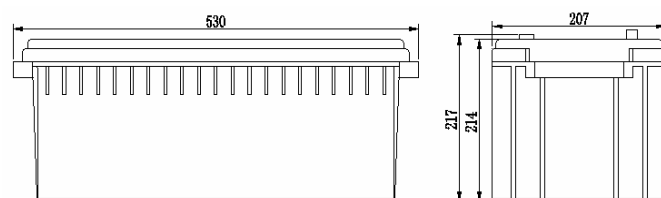
| F.V/TIME | 15min | 30min | 60min | 2h | 3h | 4h | 5h | 6h | 8h | 10h | 20h | 48h | 120h |
|----------|-------|-------|-------|------|------|------|------|------|------|------|------|------|------|
| 9.60V | 216 | 149 | 92.8 | 54.4 | 38.4 | 30.2 | 25.3 | 21.6 | 16.8 | 15.0 | 8.16 | --- | --- |
| 9.90V | 211 | 146 | 92.0 | 54.1 | 38.1 | 30.1 | 25.1 | 21.4 | 16.6 | 15.0 | 8.16 | --- | --- |
| 10.2V | 203 | 142 | 89.6 | 53.6 | 37.9 | 29.8 | 25.0 | 21.3 | 16.6 | 14.9 | 8.08 | 3.57 | --- |
| 10.5V | 197 | 138 | 88.0 | 52.8 | 37.6 | 29.6 | 24.8 | 21.1 | 16.5 | 14.8 | 8.00 | 3.54 | 1.47 |
| 10.8V | 186 | 133 | 84.8 | 51.5 | 36.5 | 28.6 | 24.0 | 20.5 | 16.0 | 14.7 | 8.00 | 3.54 | 1.47 |

Constant Power Discharge Characteristics (Watt, 25°C)

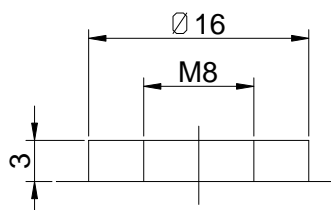
| F.V/TIME | 15min | 30min | 60min | 2h | 3h | 4h | 5h | 6h | 8h | 10h | 20h | 48h | 120h |
|----------|-------|-------|-------|-----|-----|-----|-----|-----|-----|-----|------|------|------|
| 9.60V | 2411 | 1699 | 1072 | 634 | 453 | 357 | 301 | 256 | 200 | 180 | 98.4 | --- | --- |
| 9.90V | 2352 | 1666 | 1056 | 629 | 451 | 355 | 299 | 254 | 200 | 179 | 98.4 | --- | --- |
| 10.2V | 2266 | 1614 | 1030 | 624 | 448 | 352 | 296 | 253 | 198 | 179 | 98.4 | 42.8 | --- |
| 10.5V | 2189 | 1576 | 1010 | 614 | 445 | 350 | 294 | 251 | 197 | 178 | 96.8 | 42.6 | 17.8 |
| 10.8V | 2074 | 1518 | 978 | 598 | 430 | 339 | 286 | 243 | 190 | 176 | 96.8 | 42.6 | 17.6 |

Note: The above characteristics data can be obtained within three charge/discharge cycles.

Dimensions



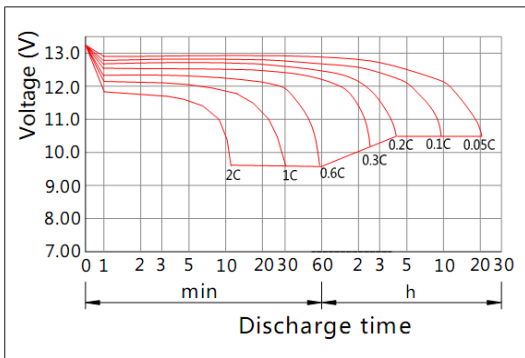
Terminal



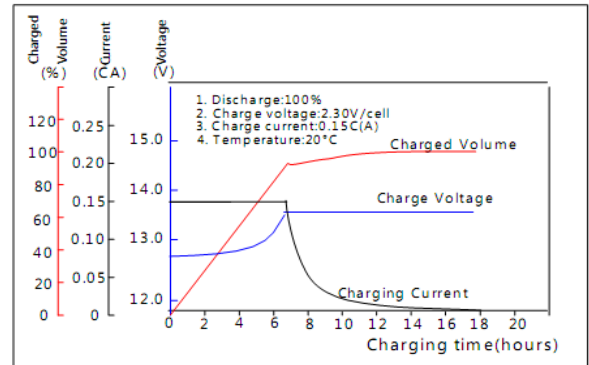
Terminal T11

LFPG12160 (12V160Ah)

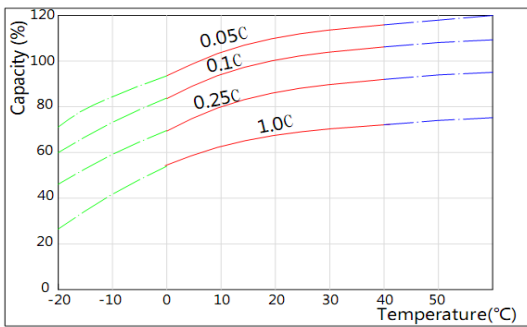
Discharge Characteristics(25°C)



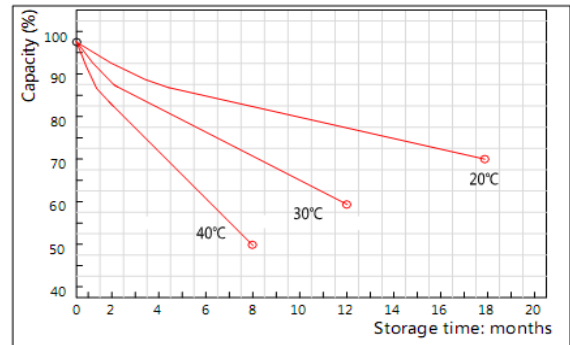
Charging Characteristics(25°C)



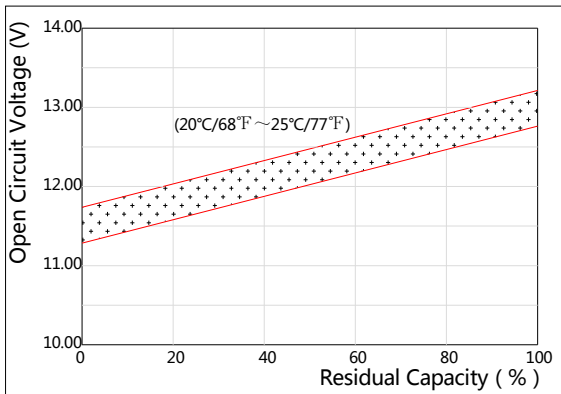
Effect of Temperature on Capacity



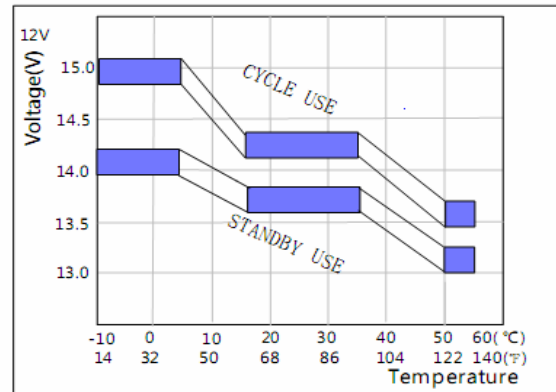
Self-discharge Characteristics



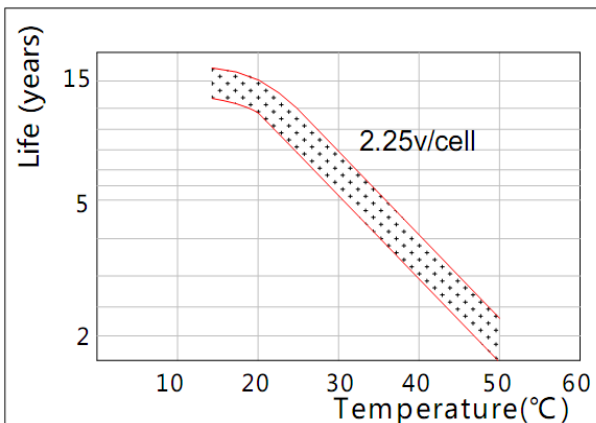
The Relationship for Open Circuit Voltage and Residual Capacity (25°C)



The Relationship for Charging Voltage and Temperature



Floating Life on Temperature



Cycle Life on D.O.D(25°C)

