

# LFP1285 (12V85Ah)

## Specifications

Nominal Voltage		12 V
Capacity (25°C)	10HR(10.8V)	85 Ah
	5HR(10.5V)	74.5Ah
	1HR(9.60V)	52.7Ah
Dimension	Length	260mm ± 2 (10.24inch)
	Width	168mm ± 2 (6.61inch)
	Height	211mm ± 2 (8.31inch)
	Total Height	T5: 233 ± 2mm (9.17inch) T9: 214 ± 2mm (8.43inch)
Approx. Weight		24.3kg (53.5lbs) ± 4%
Terminal type		T5/T9
Internal resistance (Fully charged, 25°C)		Approx. 5mΩ
Capacity affected by temperature (10HR)	40°C	102%
	25°C	100%
	0°C	85%
	-15°C	65%
Self-discharge (25°C)	3 month	Remaining Capacity: 91%
	6 month	Remaining Capacity: 82%
	12 month	Remaining Capacity: 65%
Nominal operating temperature		25°C ± 3°C (77°F ± 5°F)
Operating temperature range	Discharge	-15°C ~ 50°C (5°F ~ 122°F)
	Charge	-10°C ~ 50°C (14°F ~ 122°F)
	Storage	-20°C ~ 50°C (-4°F ~ 122°F)
Float charging voltage(25°C)	13.50 to 13.80V Temperature compensation: -18mV/°C	
Cyclic charging voltage(25°C)	14.50 to 14.90V Temperature compensation: -30mV/°C	
Maximum charging current	25.5A	
Terminal material	Copper	
Maximum discharge current	800A(5 sec.)	
Designed floating life(20°C)	12 years	

- ◆ Absorbent glass mat technology;
- ◆ Recognized by UL & CE;
- ◆ ABS container.

## Constant Current Discharge Characteristics (A, 25°C)

F.V/TIME	10min	15min	30min	60min	2h	3h	4h	5h	8h	10h	20h
9.60V	179	140	85.0	52.7	31.1	21.7	17.8	15.2	10.4	8.65	4.54
9.90V	173	137	83.3	51.9	30.9	21.5	17.7	15.1	10.3	8.64	4.53
10.2V	166	132	80.8	50.6	30.6	21.4	17.5	15.0	10.3	8.61	4.52
10.5V	159	127	78.8	49.6	30.1	21.3	17.4	14.9	10.2	8.56	4.49
10.8V	150	121	75.9	48.1	29.4	20.6	16.9	14.4	9.89	8.50	4.46

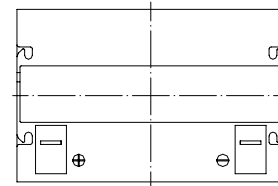
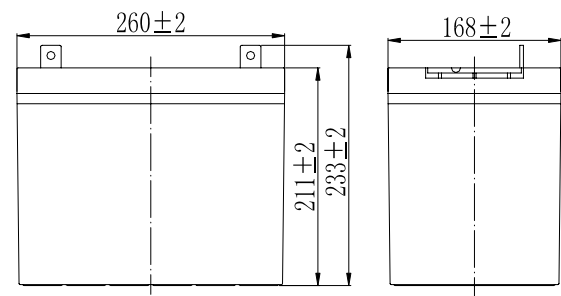
## Constant Power Discharge Characteristics (Watt, 25°C)

F.V/TIME	10min	15min	30min	60min	2h	3h	4h	5h	8h	10h	20h
9.60V	1928	1540	954	601	360	255	209	179	124	103	54.5
9.90V	1870	1503	935	592	358	253	208	178	123	103	54.4
10.2V	1793	1448	906	577	354	252	206	177	122	103	54.2
10.5V	1716	1398	884	565	349	250	205	176	121	102	53.9
10.8V	1619	1324	852	548	340	242	199	171	118	101	53.6

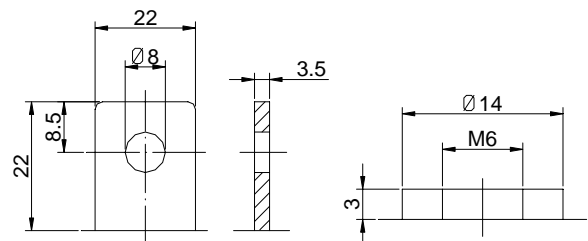
Note: The above characteristics data can be obtained within three charge/discharge cycles.



## Dimensions



## Terminal

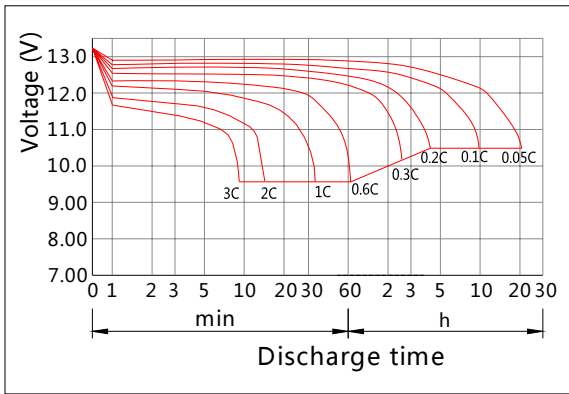


Terminal T5

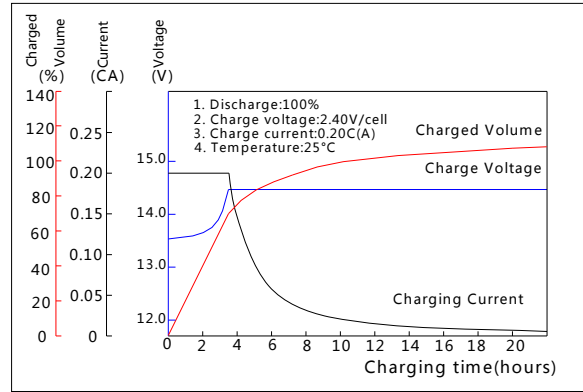
Terminal T9

# LFP1285 (12V85Ah)

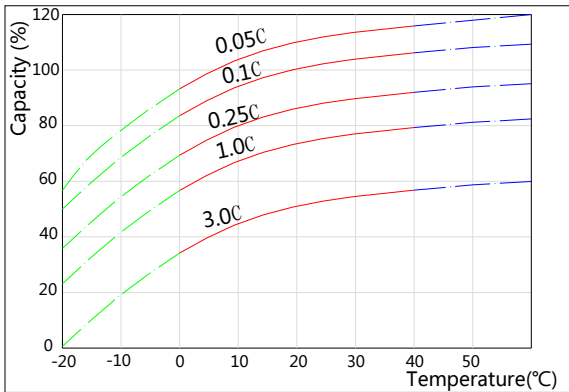
## Discharge Characteristics(25°C)



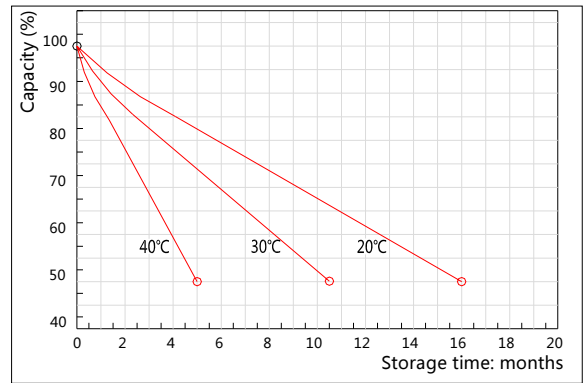
## Charging Characteristics(25°C)



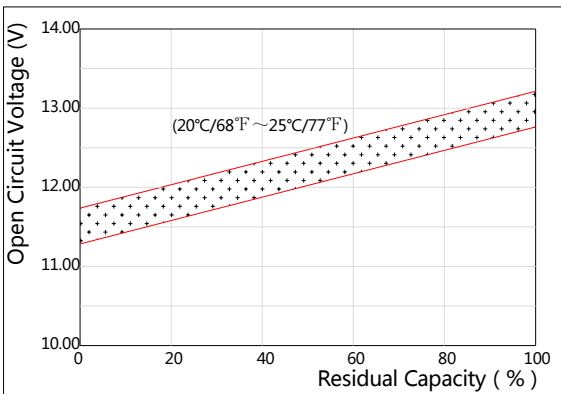
## Effect of Temperature on Capacity



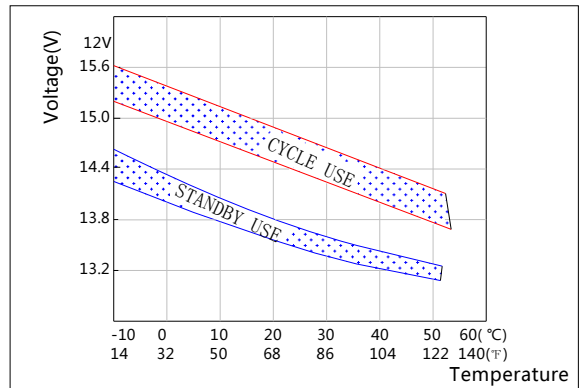
## Self-discharge Characteristics



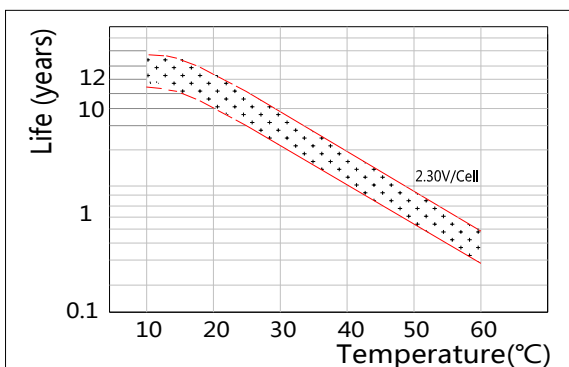
## The Relationship for Open Circuit Voltage and Residual Capacity (25°C)



## The Relationship for Charging Voltage and Temperature



## Floating Life on Temperature



## Cycle Life on D.O.D(25°C)

